





**stem** freely

# About Stem Audio

Here at Stem Audio, we want everyone to have the freedom to blend audio into any room for a fully customizable solution. Our solutions address real issues that users, IT professionals, and AV integrators face every day.

A background image showing two people from behind, looking at a large screen or display. The person on the left is wearing a dark shirt, and the person on the right is wearing a light blue shirt. They are both looking intently at the screen, which displays some blurred content. The overall tone is professional and collaborative.

## THE 6 COMMON PAINS

- **ROOM DESIGN** – how to spec a room properly
- **DIFFICULTY OF INSTALLATION** – wiring, powering, and programming a room
- **TESTING A ROOM** – having an objective way to verify successful installation
- **CUSTOMIZING A SOLUTION** – matching a solution for different rooms
- **MANAGING** – insuring reliability on large installations on the day-to-day
- **TRAINING** – making sure everyone “plays nice” with new technology

# Table



## POWER AT YOUR FINGERTIPS

All Stem solutions connect via Power over Ethernet (PoE) making installation easier than ever. Running cables to power your products will never be an issue again.

## NOT YOUR TYPICAL SPEAKERPHONE

With nine built-in beamforming microphones and innovative downward-facing speakers, Table takes the quality of your meetings to the next level.



# Wall

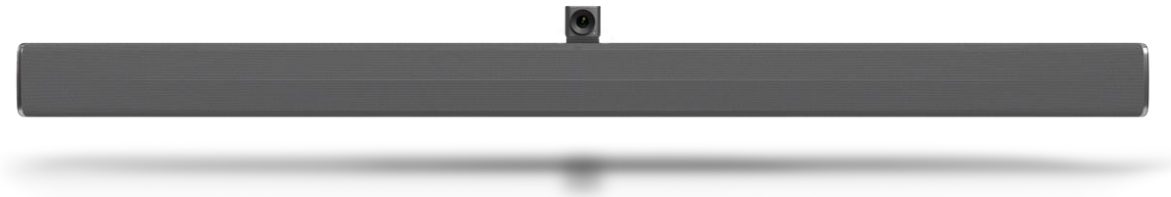


## HEAR AND BE HEARD

With a 15-microphone array performing real beamforming plus full-range speakers and subwoofers, Wall ensures everybody has a voice.

## INSTANT ALL-IN-ONE

With a built-in mount for a Huddly IQ or AVer Cam 340+, all you have to do is click it in and you're good to go. For larger rooms you can use the AVer Cam 530 PRO.







# Ceiling

WE'VE GOT YOU COVERED

With 100 microphones and three array options,  
no one gets left out of the conversation.

## FLUSH MOUNT OR CHANDELIER?

Let your audio blend into the room or show-off its beautiful design. Ceiling gives you the option to flush mount the device to a ceiling tile or tie it into the design of your room in chandelier mode.



# Mix & Match

NEVER LIMIT YOURSELF AGAIN



Stem gives you the freedom to create a totally unique and customized conferencing experience for any room.

# Hub

## SMALL AND IN-CHARGE

When more than one device is used in a room, Stem Hub becomes the brains of the operation.

## YOU WANTÉ THE DANTE

With Dante, USB Type B, Ethernet, VoIP, and pluggable terminal blocks, Hub hooks you up with a wide variety of connectivity options.

 **Dante**<sup>®</sup>  
SPOKEN HERE





# Control

## USE WHAT YOU ALREADY KNOW

Intuitive design and seamless integration with your favorite video conferencing platform means using Control will become second nature.

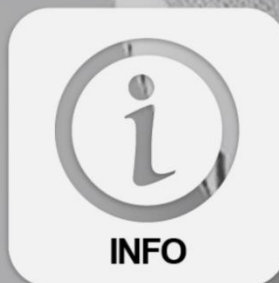


## MULTIPLE MOUNT OPTIONS

Control comes with a dual mounting stand and can be mounted on a swivel.



## THE 6 COMMON PAINS



A background image showing two people from behind, looking at a large screen or map. The person on the left is wearing a dark shirt, and the person on the right is wearing a light blue shirt. They are both looking intently at the screen, which displays some data or a map. The image is slightly blurred, giving it a professional and focused feel.

## THE 6 COMMON PAINS

- **ROOM DESIGN** – how to spec a room properly
- **DIFFICULTY OF INSTALLATION** – wiring, powering, and programming a room
- **TESTING A ROOM** – having an objective way to verify successful installation
- **CUSTOMIZING A SOLUTION** – matching a solution for different rooms
- **MANAGING** – insuring reliability on large installations on the day-to-day
- **TRAINING** – making sure everyone “plays nice” with new technology

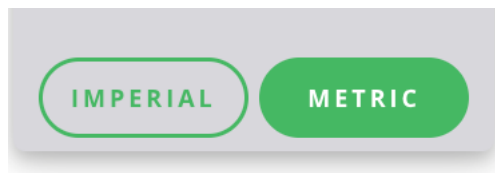
# RoomDesign

## DESIGN BEFORE YOU BUY

Virtually recreate any room, add-in products, and even check the coverage so you know exactly what you need for your room before spending a single cent. Now you can spec' a room all on your own RoomDesign!

## INTRODUCING METRIC MODE

Switch between imperial and metric mode.





A background image showing two people, a man and a woman, from behind, looking at a large screen or map. The man is on the left, wearing a dark shirt, and the woman is on the right, wearing a light blue shirt. They are both looking intently at the screen. The image has a blue tint and a semi-transparent text box overlaid in the center.

## THE 6 COMMON PAINS

- **ROOM DESIGN** – how to spec a room properly
- **DIFFICULTY OF INSTALLATION** – wiring, powering, and programming a room
- **TESTING A ROOM** – having an objective way to verify successful installation
- **CUSTOMIZING A SOLUTION** – matching a solution for different rooms
- **MANAGING** – insuring reliability on large installations on the day-to-day
- **TRAINING** – making sure everyone “plays nice” with new technology

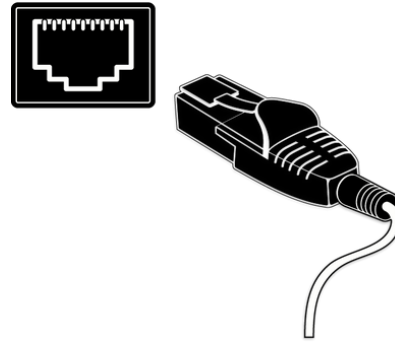


# Set Up



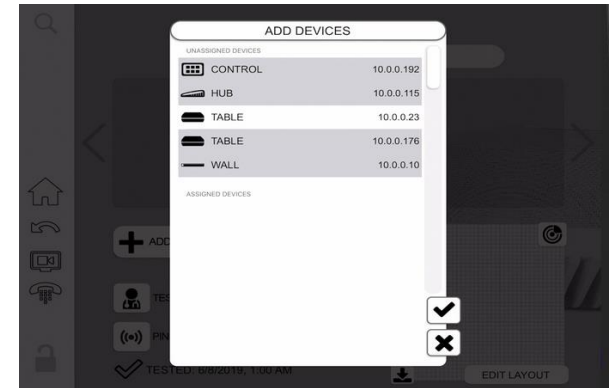
## PLACE YOUR PRODUCTS

Bring your products into your room and place them wherever you want.



## PLUG THEM IN

Plug your products in & connect them to the network.



## GIVE THEM A HOME

Create a new room via the Stem platform or assign your products to an existing room.

# *RoomAdapt*

## INSTANTLY TUNE YOUR ROOM

RoomAdapt lets you instantly optimize the performance of your ecosystem, all on your own, in whatever room or environment you place it in, all at the press of a button! This technology analyzes your room's acoustics at the touch of a button and automatically adjusts settings to ensure your products are optimized for best audio clarity.



A background image showing two people from behind, looking at a large screen or display. The person on the left has dark curly hair in a bun, and the person on the right has reddish-brown curly hair in a bun. They are both wearing light blue shirts. The screen they are looking at is out of focus, showing some graphical elements. The overall tone is professional and collaborative.

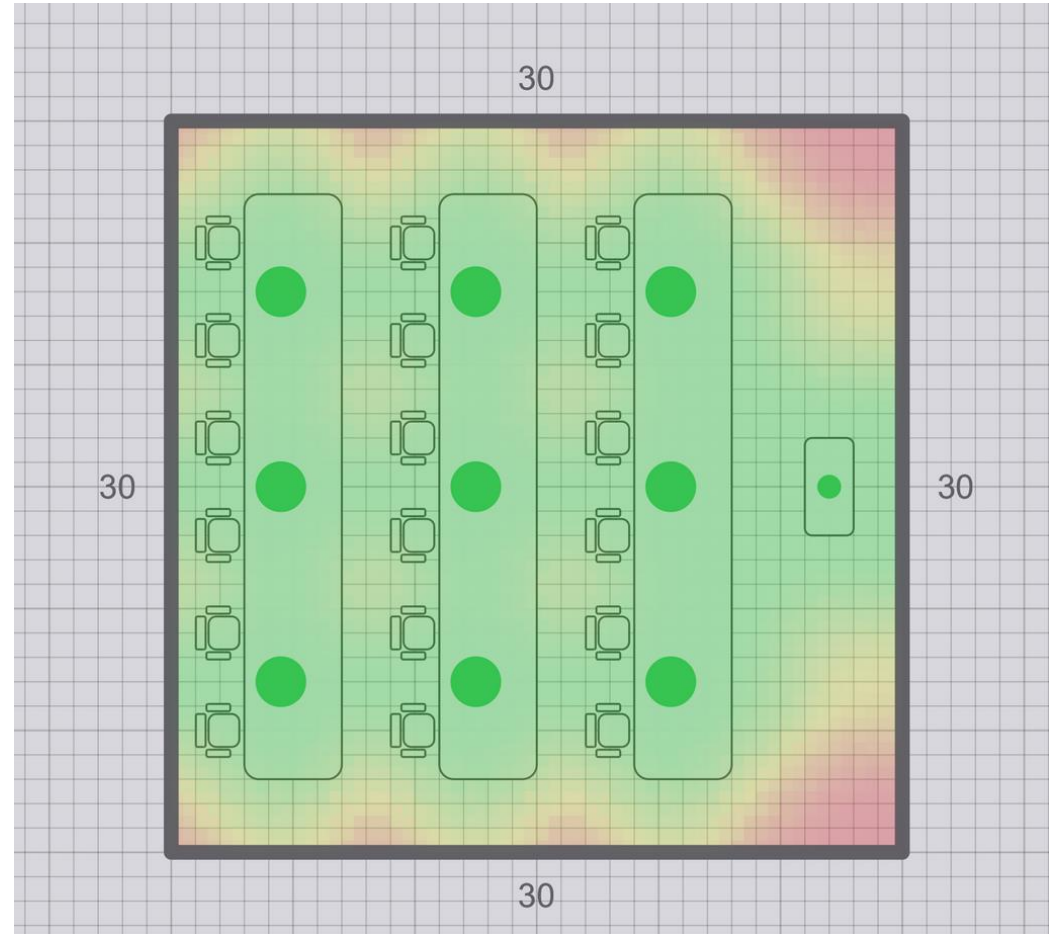
## THE 6 COMMON PAINS

- **ROOM DESIGN** – how to spec a room properly
- **DIFFICULTY OF INSTALLATION** – wiring, powering, and programming a room
- **TESTING A ROOM** – having an objective way to verify successful installation
- **CUSTOMIZING A SOLUTION** – matching a solution for different rooms
- **MANAGING** – insuring reliability on large installations on the day-to-day
- **TRAINING** – making sure everyone “plays nice” with new technology

# RoomCheck

## VERIFY YOUR COVERAGE

RoomCheck gives you a completely objective way to test a room's audio pickup coverage when an install is complete. Initiate RoomCheck and see an accurate heat-map of your room's audio pickup so that you can make sure you're always heard from anywhere in the room.





A background image showing two people from behind, looking at a large screen or map. The person on the left has dark hair in a bun, and the person on the right has reddish-brown hair in a bun. They are both wearing light blue shirts. The background is slightly blurred, showing what appears to be a large room or a map on a wall.

## THE 6 COMMON PAINS

- **ROOM DESIGN** – how to spec a room properly
- **DIFFICULTY OF INSTALLATION** – wiring, powering, and programming a room
- **TESTING A ROOM** – having an objective way to verify successful installation
- **CUSTOMIZING A SOLUTION** – matching a solution for different rooms
- **MANAGING** – insuring reliability on large installations on the day-to-day
- **TRAINING** – making sure everyone “plays nice” with new technology



# The Building Blocks



Ceiling



Wall



Hub



Table



Control





A background image showing two people from behind, looking at a large screen or display. The person on the left is wearing a dark shirt, and the person on the right is wearing a light blue shirt. They are both looking intently at the screen, which displays some blurred content. The overall tone is professional and collaborative.

## THE 6 COMMON PAINS

- **ROOM DESIGN** – how to spec a room properly
- **DIFFICULTY OF INSTALLATION** – wiring, powering, and programming a room
- **TESTING A ROOM** – having an objective way to verify successful installation
- **CUSTOMIZING A SOLUTION** – matching a solution for different rooms
- **MANAGING** – insuring reliability on large installations on the day-to-day
- **TRAINING** – making sure everyone “plays nice” with new technology

# *Remote Management*

MONITOR YOUR ECOSYSTEM  
FROM ANYWHERE

Remote management allows you to monitor usage, generate reports, and receive alerts from anywhere, in real-time, so you can address issues before a meeting is interrupted.



A background image showing two people from behind, looking at a large screen or display. The person on the left has dark hair in a bun, and the person on the right has reddish-brown hair in a bun. They are both wearing light blue shirts. The screen they are looking at is out of focus, showing some blue and white shapes. The overall tone is professional and collaborative.

## THE 6 COMMON PAINS

- **ROOM DESIGN** – how to spec a room properly
- **DIFFICULTY OF INSTALLATION** – wiring, powering, and programming a room
- **TESTING A ROOM** – having an objective way to verify successful installation
- **CUSTOMIZING A SOLUTION** – matching a solution for different rooms
- **MANAGING** – insuring reliability on large installations on the day-to-day
- **TRAINING** – making sure everyone “plays nice” with new technology



# Compatibility

## WE PLAY NICE WITH OTHERS

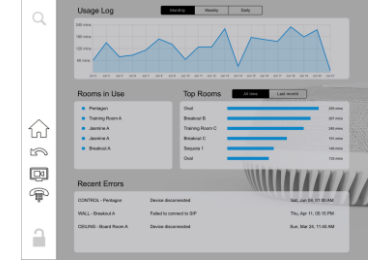
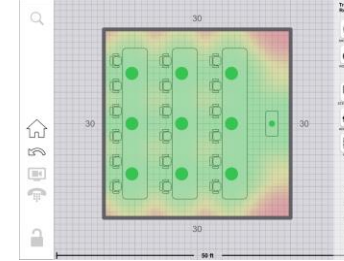
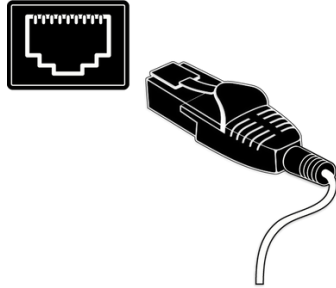
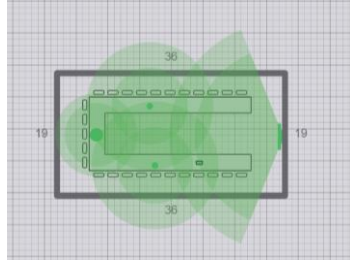
The Stem ecosystem is compatible with all of your favorite video conferencing platforms so you can use the software you love with the products you love!

zoom



# From Design to Implementation

Design → Install → Adapt → Check → Manage





# stem audio

The Conference Room Ecosystem

For more information please visit [stemaudio.com](https://stemaudio.com)

# The Technology

## Distributed Arrays

This new technology allows the multiple microphones on each product to work together as if they were one device and gives you the freedom to place your audio wherever you want.

## Machine Learning

*RoomCheck* utilizes the artificial intelligence of neural networks and machine learning technologies to know exactly what your room will sound like from any point in the room.

## *RoomAdapt*

Stem's *RoomAdapt* technology analyzes your room's acoustics at the touch of a button and automatically adjusts settings to ensure your products are optimized for best audio clarity.



# The Software





BACKUP SLIDES







